



560 HIGUERA STREET, SUITE C  
SAN LUIS OBISPO, CA 93401  
TEL (805) 476-0399

CONSULTANTS

CIVIL ENGINEER  
ABOVE GRADE ENGINEERING, INC.  
245 Higuera Street  
San Luis Obispo, CA 93401  
TEL (805) 540-5115

LANDSCAPE ARCHITECTS  
FRMA CONSULTANTS INCORPORATED  
187 Tank Farm Road Suite 230  
San Luis Obispo, CA 93401  
TEL (805) 781-9800

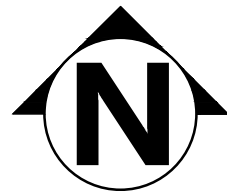
ARCHITECT STAMP

CONSULTANT STAMP



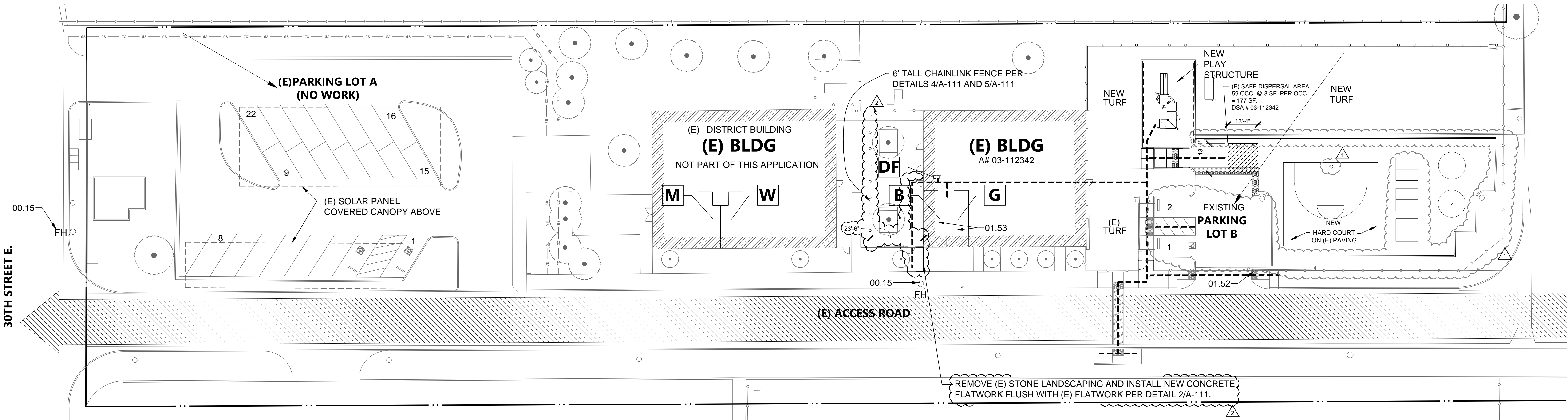
CODE SITE PLAN

SCALE: 1" = 20'-0" 1



(E)PARKING LOT A:  
TOTAL SPACES IN LOT A = 22  
PROVIDED: ACC SPACES IN LOT A = 2 (1 REG, 1 VAN)  
PER TABLE 11B-202.8:  
>25 SPACES = 1 ACC PARKING REQUIRED  
PER 11B-208.2.4 CBC:  
2 ACC = 1 VAN, 1 REG  
FILE NO. 19-90, A#03-101283

PARKING LOT B:  
SPACES IN LOT B = 2  
PROVIDED: ACC SPACES IN LOT B = 1 (1 VAN)  
PER TABLE 11B-202.8:  
>25 SPACES = 1 ACC PARKING REQUIRED  
PER 11B-208.2.4 CBC:  
1 ACC = 1 VAN



CODE ANALYSIS LEGEND

- G** (E) GIRLS ACC RESTROOM PER A# 03-112342
- B** (E) BOY'S ACC RESTROOM PER A# 03-112342
- M** (E) STAFF MEN'S ACC RESTROOM PER A# 03-105304
- W** (E) STAFF WOMEN'S ACC RESTROOM PER A# 03-105304
- DF** (E) ACC HI-LO DRINKING FOUNTAIN PER A# 03-112342

20' WIDE FIRE ACCESS LANE

PROPERTY LINE

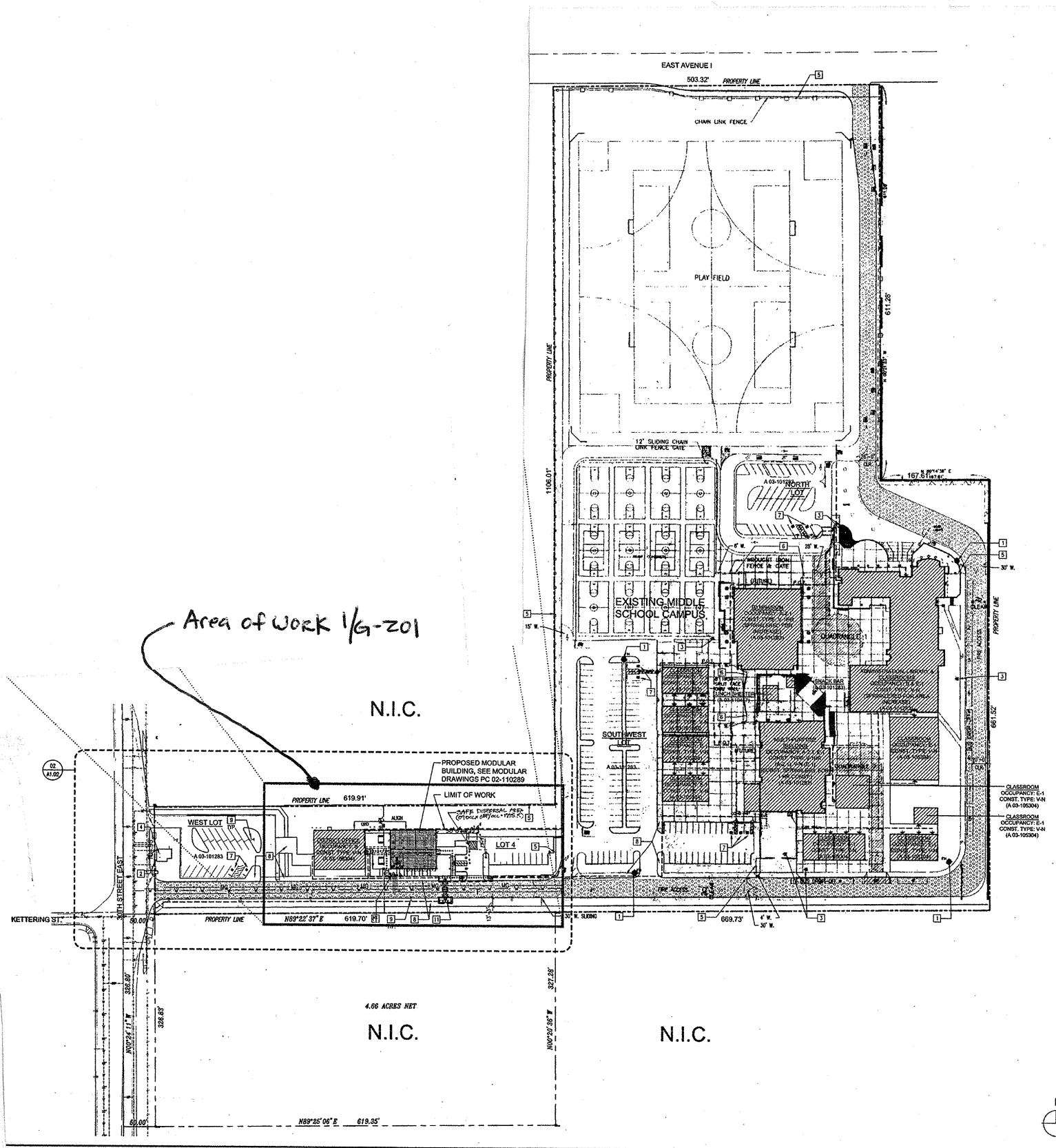
PATH OF TRAVEL (P.O.T.) AS INDICATED, IS A COMMON BARRIER FREE ACCESS ROUTE WITHOUT ANY ABRUPT VERTICAL CHANGES EXCEEDING 1/2" BEVELED AT 1:2 MAXIMUM SLOPE, EXCEPT THAT LEVEL CHANGES DO NOT EXCEED 1/4" VERTICAL AND IS AT LEAST 48" WIDE. THE PATH SURFACE IS SLIP RESISTANT, STABLE, FIRM, AND SMOOTH. PASSING SPACES AT LEAST 60"x60" ARE LOCATED NOT MORE THAN 200' APART. PARTS OF P.O.T. WITH CONTINUOUS GRADIENTS HAVE 60" LEVEL AREAS NOT MORE THAN 400' APART. THE CROSS-SLOPE DOES NOT EXCEED 2% AND SLOPE IN THE DIRECTION OF TRAVEL IS LESS THAN 5% UNLESS OTHERWISE INDICATED. (POT) SHALL BE MAINTAINED FREE OF OVERHANGING OBSTRUCTIONS TO 80" MINIMUM (11B-307.4) AND PROTRUDING OBJECTS GREATER THAN 4" PROJECTION FROM WALL AND ABOVE 27" AND LESS THAN 80".

**DESIGN PROFESSIONAL IN GENERAL RESPONSIBLE CHARGE STATEMENT:**  
THE P.O.T. IDENTIFIED IN THESE CONSTRUCTION DOCUMENTS IS COMPLIANT WITH THE CURRENT APPLICABLE CALIFORNIA BUILDING CODE ACCESSIBILITY PROVISIONS FOR PATH OF TRAVEL REQUIREMENTS FOR ALTERATIONS ADDITIONS AND STRUCTURAL REPAIRS. AS PART OF THE DESIGN OF THIS PROJECT, THE P.O.T. WAS EXAMINED AND ANY ELEMENTS, COMPONENTS, OR PORTIONS OF THE P.O.T. THAT WERE DETERMINED TO BE NONCOMPLIANT 1) HAVE BEEN IDENTIFIED AND 2) THE CORRECTIVE WORK NECESSARY TO BRING THEM INTO COMPLIANCE HAS BEEN INCLUDED WITHIN THE SCOPE OF THIS PROJECT'S WORK THROUGH DETAILS, DRAWINGS, AND SPECIFICATIONS INCORPORATED INTO THESE CONSTRUCTION DOCUMENTS. ANY NONCOMPLIANT ELEMENTS, COMPONENTS, OR PORTIONS OF THE P.O.T. THAT WILL NOT BE CORRECTED BY THIS PROJECT BASED ON VALUATION THRESHOLD LIMITATIONS OR A FINDING OF UNREASONABLE HARDSHIP ARE SO INDICATED IN THESE CONSTRUCTION DOCUMENTS.

DURING CONSTRUCTION, IF P.O.T. ITEMS WITHIN THE SCOPE OF THE PROJECT REPRESENTED AS CODE COMPLIANT ARE FOUND TO BE NONCONFORMING BEYOND REASONABLE CONSTRUCTION TOLERANCES, THEY SHALL BE BROUGHT INTO COMPLIANCE WITH THE CBC AS PART OF THIS PROJECT BY MEANS OF A CONSTRUCTION CHANGE DOCUMENT.

KEYNOTES

- 00.15 (E) FIRE HYDRANT
- 01.52 AUTHORIZATION SIGNAGE PER DETAIL 22/A-111
- 01.53 EXISTING RESTROOM (BOY'S & GIRLS) TO BE UPGRADED TO CURRENT CBC 2016 CODE. SEE LIST BELOW:
- ① ROOM IDENTIFICATION AND DOOR SIGNAGE AT ENTRY DOOR AND WALL
- ② SELF-CLOSING HINGE AT WHEELCHAIR ACCESSIBLE STALL DOOR.
- ③ SLIDE BOLT OR FLIP-OVER TYPE LATCH AT WHEELCHAIR ACCESSIBLE STALL DOOR.
- ④ LOOP OR U-SHAPED WIRE PULLS BOTH SIDES OF D.P. SHALL DOOR, 34"-44" A.F.F.
- ⑤ COAT HOOK AT 48" A.F.F. MAX AT WHEELCHAIR ACCESSIBLE STALL.
- ⑥ ENTRY DOOR OPERATING PRESSURE TO OPEN 5 LBS. MAXIMUM.
- ⑦ DISPENSERS/WASTE DISPOSAL BINS CAN NOT PROJECT INTO CLEAR SPACE REQUIREMENTS OF ANY FIXTURE
- ⑧ DISPENSERS AND OTHER PROTRUDING ELEMENTS, WITH LEADING EDGES BETWEEN 27" AND 80" A.F.F. WITHIN THE CIRCULATION SPACE, MAY NOT PROJECT MORE THAN 4" FROM THE WALL.
- ⑨ LOCATE THE WASTE DISPOSAL BIN (INDICATE A SIZE) WHICH WILL NOT ENCRUSH INTO ANY FIXTURE, MANEUVERING, OR DOOR CLEARANCE REQUIREMENT.
- ⑩ TOILET PAPER DISPENSER SHOULD NOT PROJECT MORE THAN 3" MAX INTO CLEAR SPACE OF TOILET BELOW GRAB BAR.
- ⑪ TOILET PAPER DISPENSERS SHALL BE 7" MIN. AND 9" MAX. IN FRONT OF WATER CLOSET PER 11B-604.7
- ⑫ TOILET PAPER DISPENSER TO BE CONTINUOUS FLOW TYPE.



OVERALL SITE PLAN

N.T.S.

THE ARCHITECT DOES NOT REPRESENT THAT THESE PLANS OR THE SPECIFICATIONS ARE SUITABLE FOR ANY SITE OTHER THAN THE ONE FOR WHICH THEY WERE SPECIFICALLY PREPARED. THE ARCHITECT DISCLAIMS RESPONSIBILITY FOR THESE PLANS AND SPECIFICATIONS IF THEY ARE USED IN WHOLE OR IN PART AT ANY OTHER SITE

PROJECT OWNER & TITLE  
**EASTSIDE UNION SCHOOL DISTRICT**  
45006 North 30th Street East  
Lancaster, CA 93535

**EUSD EASTSIDE ACADEMY PLAYGROUND**  
3126 EAST AVE I,  
LANCASTER, CA 93535

SHEET TITLE

**CODE SITE PLAN**

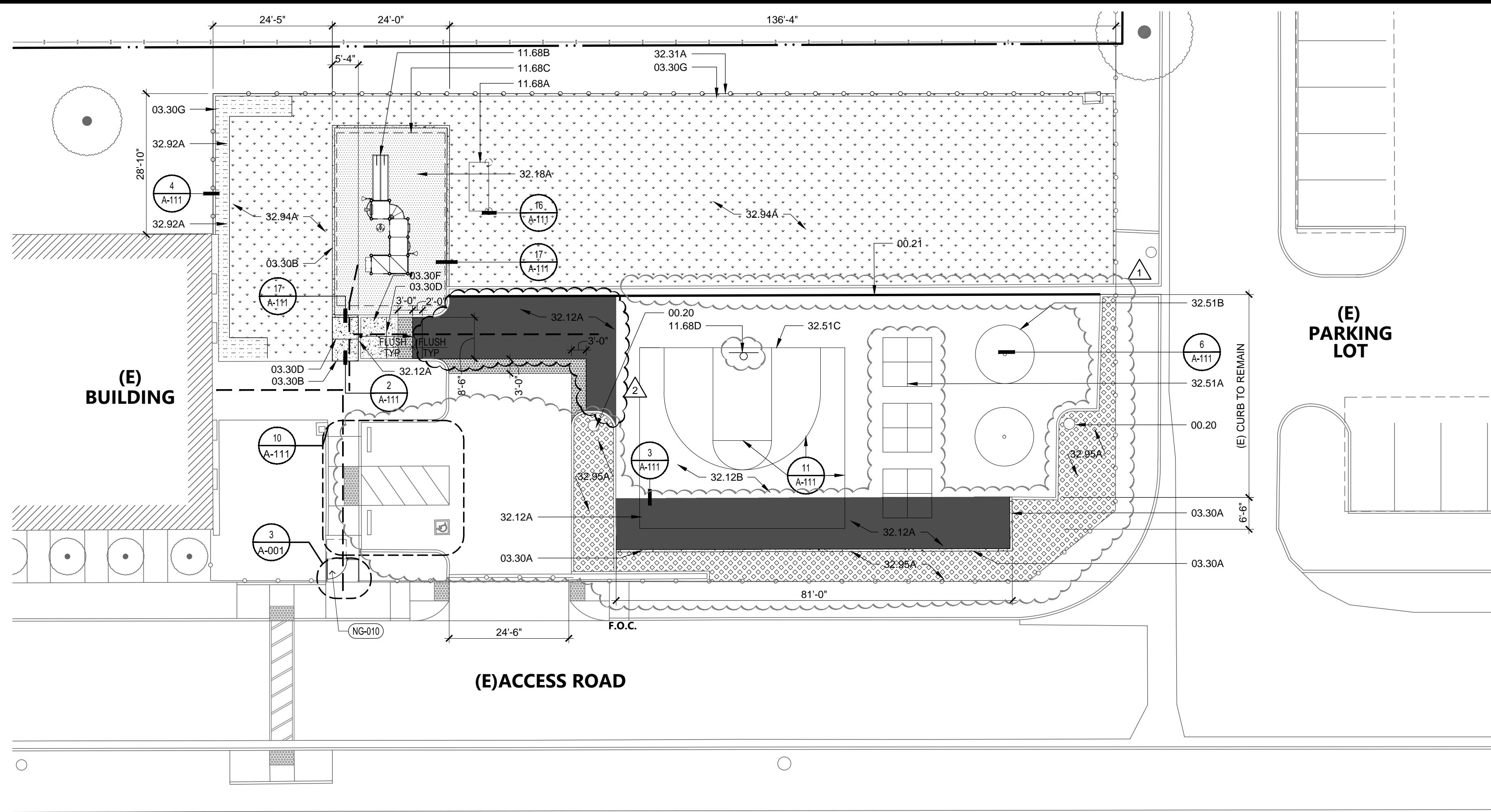
DRAWN BY: MB JOB NUMBER: 18181.02

SHEET NO.

**G-201**

DATE: JUNE 04, 2020





# KEYNOTES

00.20	(E) LIGHT POLE TO REMAIN
00.21	(E) EDGE OF AC PAVING TO REMAIN
00.22	(E) FENCE TO REMAIN
00.23	(E) ASPHALT PAVING TO REMAIN, PROTECT IN PLACE.
00.24	(E) ROLLING CHAIN-LINK GATE TO REMAIN
00.25	(E) CONC. FLATWORK TO REMAIN
00.26	(E) CONC. CURB TO REMAIN, PROTECT IN PLACE.
00.27	(E) DRAINAGE SWALE TO REMAIN, PROTECT IN PLACE
00.52	(E) CONC. CURB TO BE DEMOLISHED
00.54	<del>(E) CONC. GUTTER TO BE DEMOLISHED</del>
00.55	(E) ASPHALT TO BE DEMOLISHED TO EXTENTS SHOWN, REFER TO C-101.
00.56	(E) PARKING STRIPPING TO BE DEMOLISHED
00.57	<del>(E) LIGHT POLE TO BE DEMOLISHED, SALVAGED TO DISTRICT.</del>
01.01	REMOVE AND PATCH BACK CONCRETE WALKWAY TO MATCH NEW--SEE DETAIL 2/A-114
03.30A	CAST-IN-PLACE CONC. CURB AND GUTTER; SEE CIVIL DRAWINGS
03.30B	CAST-IN-PLACE CONC. WALKWAY, SEE CIVIL DRAWINGS
03.30D	CONC. CONTROL JOINT @ 5MAX. TYP. SEE DETAIL 1B/A-111
03.30E	<del>6" CONC. EXPANSION JOINT AT MID-LENGTH OF WALKWAY AND EVERY 30' MAX.</del>
	SEE DETAIL 1B/A-111
03.30F	CONC. RAMP DOWN 5% MAX SLOPE, 2% MAX CROSS SLOPE
03.30G	6" CONC. MOW CURB PER LANDSCAPE, SEE 11/L-2
11.68A	4x6" YOUTH SOCCER GOAL-FIXED IN PLACE
11.68B	PLAY STRUCTURE BY PLAYCRAFT SYSTEMS, MODEL # R50868C08, INCLUDING TRANSFER SYSTEM AND PLATFORM, AND SAFETY SIGN.
11.68C	PLAY STRUCTURE CLEAR FLOOR AREA
11.68D	YOUTH BASKETBALL HOOP REFER TO DETAIL 13/A-111
32.12A	ASPHALT PAVING
32.12B	(E) ASPHALT W/ NEW HARD COURT STRIPING HARD PLAY COURTS, SEE COURT PLANS ON A-111
32.17C	4" WIDE WHITE STRIPING
32.18A	POURED RUBBER PLAYGROUND PROTECTIVE SURFACE - PER CBC 11B-1008.2.6
32.31A	6" TALL CHAIN LINK FENCE SEE DETAILS 4/A-111 & 5/A-111
32.33A	6"-LONG SEALED CONCRETE TABLE W/ SEALED CONCRETE BENCHES
32.51A	FOUR SQUARE COURT, TYP.
32.51B	TETHERBALL COURT, TYP. - REFER TO DETAIL 8/A-111
32.51C	BASKETBALL COURT,
32.92A	LANDSCAPED AREA W/ WOOD CHIP MULCH GROUND COVERING, REFER TO LANDSCAPE DRAWINGS FOR PLANTINGS SHEET L.2
32.94A	TURF, REFER TO LANDSCAPE DRAWINGS
32.95	ARTIFICIAL TURF

AGENCY APPROVAL FILE #42-48



560 HIGUERA STREET, SUITE C  
SAN LUIS OBISPO, CA 93401  
TEL (805) 476-0399

CONSULTANTS

CIVIL ENGINEER  
ABOVE GRADE ENGINEERING, INC.  
245 Higuera Street  
San Luis Obispo, CA 93401  
TEL (805) 540-5115

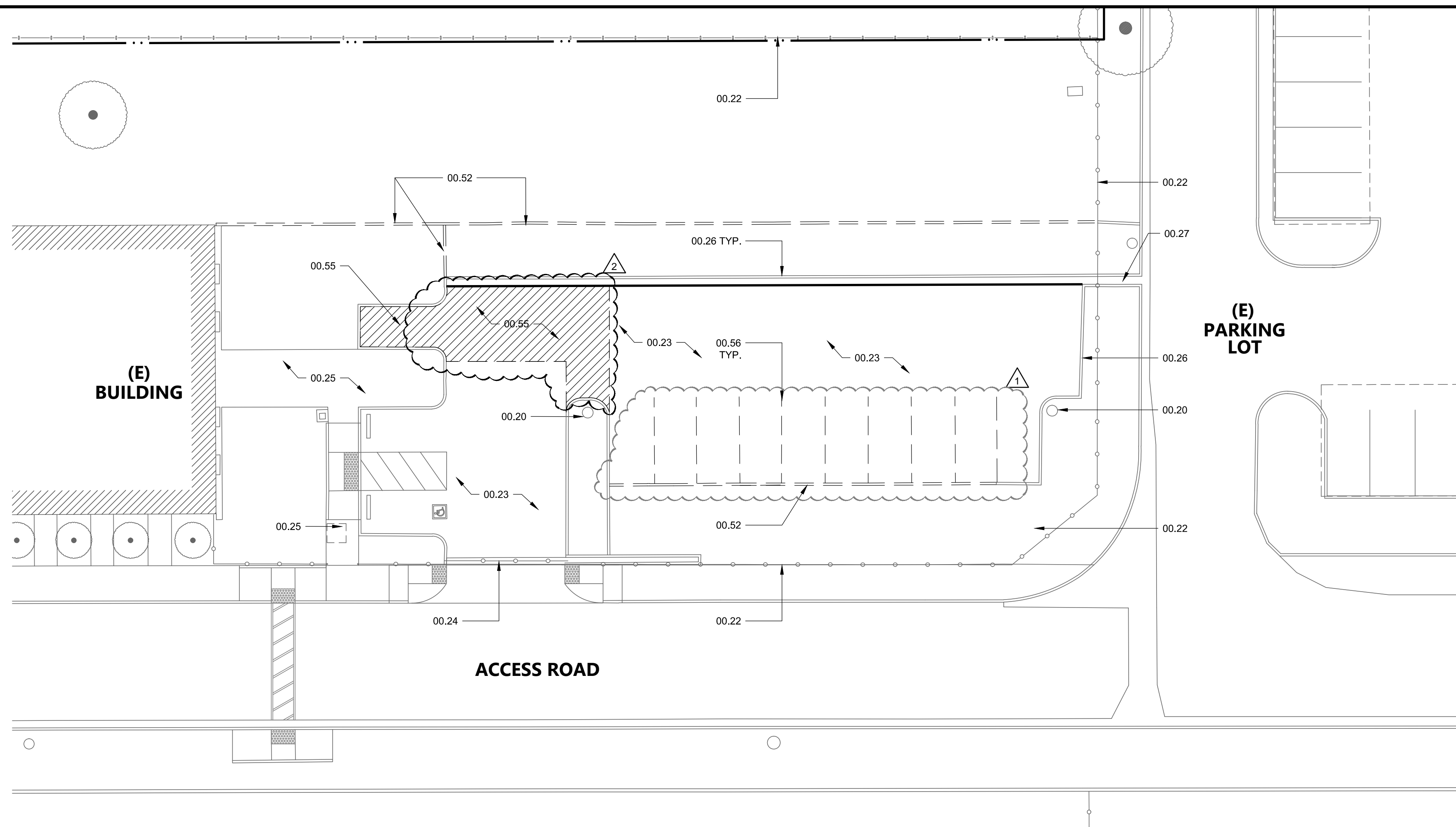
**LANDSCAPE ARCHITECTS**  
FIRMA CONSULTANTS INCORPORATED  
187 Tank Farm Road Suite 230  
San Luis Obispo, CA 93401  
TEL (805) 781-9800

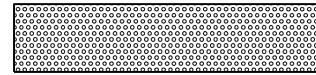
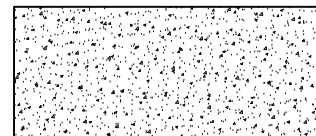
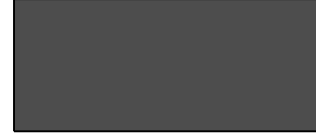
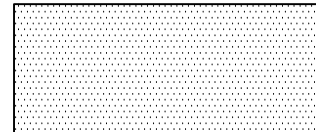
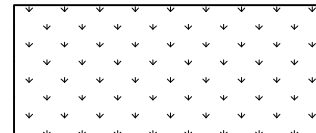
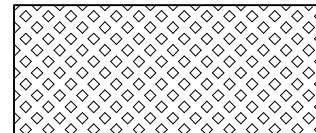
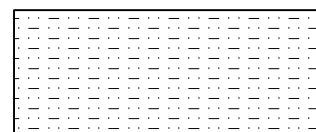
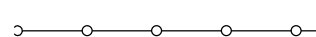

**PROPOSED SITE PLAN** SCALE: 1/16" = 1'

SCALE: 1/16" = 1'

1

### SITE PLAN LEGEND



	ITEM TO BE DEMOLISHED
	TRUNCATED DOMES - DETECTABLE WARNING PER 20/A-111
	CAST-IN-PLACE CONCRETE
	ASPHALT PAVING
	POURED RUBBER PLAYGROUND PROTECTIVE SURFACE
	GRASS / TURF
	ARTIFICIAL TURF
	WOOD CHIP MULCH + LANDSCAPING
	6' TALL CHAIN LINK FENCE
	PATH OF TRAVEL SEE 4/A-001

THE ARCHITECT DOES NOT REPRESENT THAT THESE PLANS OR THE SPECIFICATIONS ARE SUITABLE FOR ANY SITE OTHER THAN THE ONE FOR WHICH THEY WERE SPECIFICALLY PREPARED. THE ARCHITECT DISCLAIMS RESPONSIBILITY FOR THESE PLANS AND SPECIFICATIONS IF THEY ARE USED IN WHOLE OR IN PART AT ANY OTHER SITE

PROJECT OWNER & TITLE  
**EASTSIDE UNION SCHOOL DISTRICT**  
45006 North 30th Street East  
Lancaster, CA 93535

**EUSD  
EASTSIDE ACADEMY  
PLAYGROUND**  
3126 EAST AVE I,  
LANCASTER, CA 93535

SHEET TITLE

## DEMO + PROPOSED SITE PLANS

DRAWN BY: MB                      JOB NUMBER: 18181.02

SHEET NO.

**A-001**

DATE: JUNE 04, 2020

XXX GATE SCHEDULE - CONTRACT IV, PHASE II

GATE NO.	GATE		FRAME MATL	HARDWARE SET NO.	DETAIL	REMARKS
	SIZE (EACH LEAF)	MATL				
NG-010	4'-0" X 7'-0"	C/L	C/L	01	18/A-111	

HARDWARE GROUP NO 01			
PROVIDE EACH SGL DOOR(S) WITH THE FOLLOWING:			
1	EA	PANIC HARDWARE	CDSI-PA-4X-98-NL-WH 630 SCH VON
1	EA	RIM CHIMNEY	200-007-001 630 SCH
1	EA	MORTISE CYLINDER	20-081-UC1 X101-44-36-083 630 SCH
2	EA	PRISMUS CORE	20-740 630 SCH
1	EA	WELD-IN LOCK BX	K-BXED-V990NL-2 600 KEE
1	EA	CYLINDER CLOSER	4040X-CP-ESRI 630 SCH
1	EA	PA MOUNTING PLATE	4040X-11P-PS SRI AS REQ'D 630 SCH
1	EA	PA FLUSH TRANSOM BRKT	4040X-419 SRI SRS REQ'D 630 SCH
1	EA	FLOOR STOP	F318L 630 SCH
1	SET	NOTE	REMANINDER OF HARDWARE BY GATE MANUFACTURER/SUPPLI FR

PATH OF TRAVEL (P.O.T.) AS INDICATED, IS A COMMON BARRIER FREE ACCESS ROUTE WITHOUT ANY APUPT VERTICAL CHANGES EXCEEDING 1/2" VEILED AT 12 MAXIMUM SLOPE, EXCEPT THAT LEVEL CHANGES MAY NOT EXCEED 1/4" VERTICAL AN IN AT LEAST 40' OF TRAVEL. THE PATH SHALL BE REFINED TO REFLECT THE EXISTING SURFACE WITH SPACES AT LEAST 60"x60" ARE LOCATED NOT MORE THAN 200' APART. PARTS OF P.O.T. WILL BE CONTINUOUS CROSS-SLOPE TO THE P.O.T. WITH A MAXIMUM OF 2% SLOPE. PARTS OF THE CROSS-SLOPE DO NOT EXCEED 2% AND SLOPE IN THE DIRECTION OF TRAVEL IS LESS THAN 5% UNLESS OTHERWISE INDICATED. (POT) SHALL BE MAINTAINED FREE OF OBSTRUCTING OBSTRUCTIONS TO THE P.O.T. WITH A MAXIMUM OF 2% SLOPE. GREATER THAN 4' PROJECTION FROM WALL AND ABOVE 27" AND LESS THAN 80".

**DESIGN PROFESSIONAL IN GENERAL RESPONSIBLE CHARGE STATEMENT:**

THE P.O.T. IDENTIFIED IN THESE CONSTRUCTION DOCUMENTS IS COMPLIANT WITH THE CURRENT APPLICABLE CALIFORNIA BUILDING CODE ACCESSIBILITY PROVISIONS FOR PATH OF TRAVEL. REQUIREMENTS FOR THE P.O.T. ARE BASED ON THE ASSUMPTIONS THAT THE PART OF THE DESIGN OF THIS PROJECT, THE P.O.T. WAS EXAMINED AND ANY ELEMENTS, COMPONENTS, OR PORTIONS OF THE P.O.T. THAT WERE DETERMINED TO BE NON-COMPLIANT 1) HAVE BEEN IDENTIFIED AND 2) THE CORRECTIONS NECESSARY TO BRING THEM INTO COMPLIANCE HAS BEEN INCLUDED WITHIN THE SCOPE OF THIS PROJECTS WORK THROUGH DETAILS, DRAWINGS, AND SPECIFICATIONS INCORPORATED INTO THESE CONSTRUCTION DOCUMENTS. THE CORRECTIONS ARE NECESSARY TO BRING COMPONENTS, OR PORTIONS OF THE P.O.T. THAT WILL NOT BE CORRECTED BY THIS PROJECT BASED ON APPLICABLE THRESHOLD LIMITATIONS OR A FINDING OF UNREASONABLE HARSHNESS AND LOCATED IN THESE CONSTRUCTION DOCUMENTS.

DURING CONSTRUCTION, IF P.O.T. ITEMS WITHIN THE SCOPE OF THE PROJECT ARE REPRESENTED AS CONSTRUCTION TOLERANCES, THE CONTRACTOR SHALL MAINTAIN REASONABLE CONSTRUCTION TOLERANCES. THEY SHALL BE BROUGHT INTO COMPLIANCE WITH THE CBC AS PART OF THIS PROJECT BY MEANS OF A CONSTRUCTION CHANGE DOCUMENT.

PATH OF TRAVEL NOTES

4

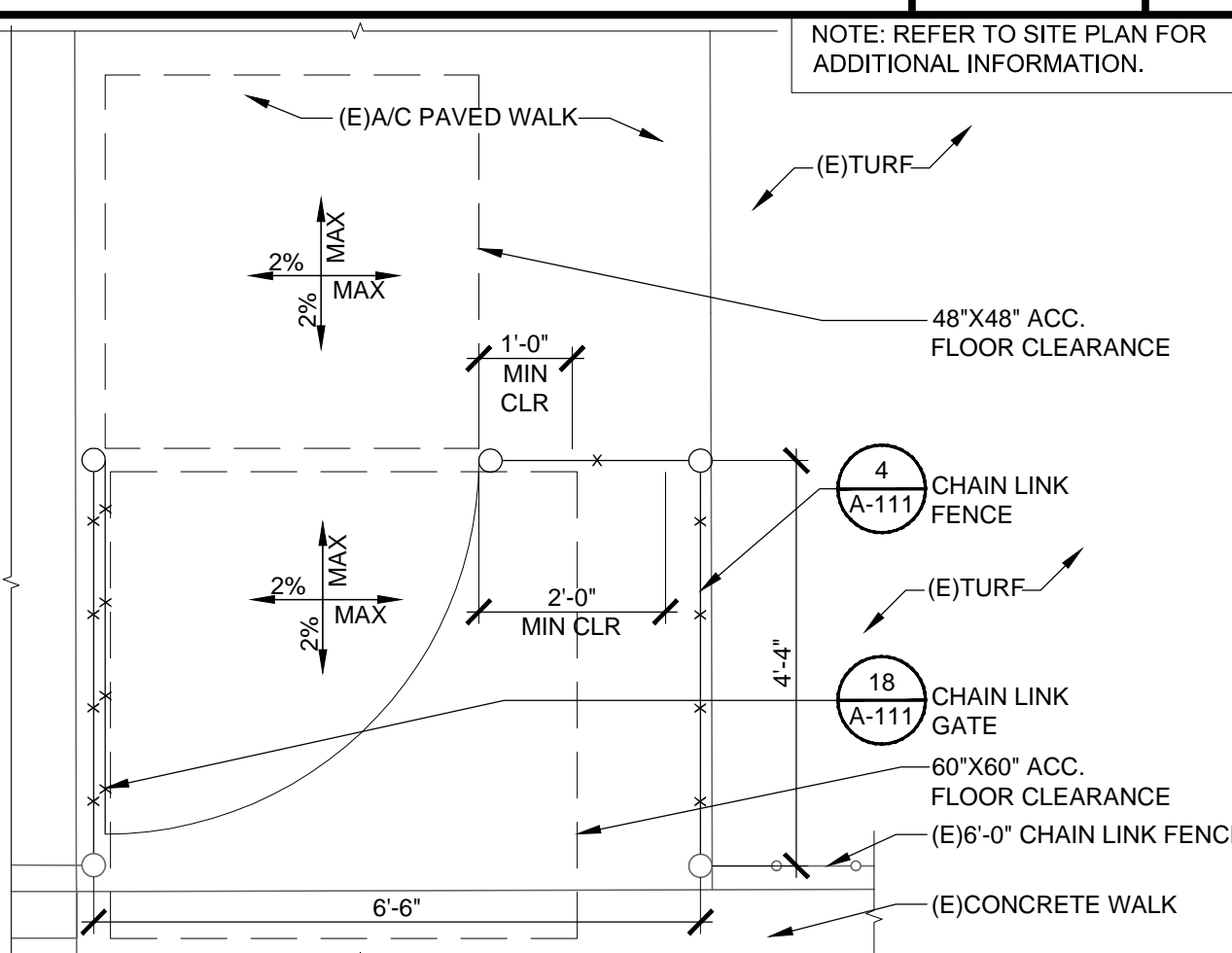
**DEMO SITE PLAN** SCALE: 1/16" = 1'

SCALE: 1/16" = 1'

6

## GENERAL NOTES

1. SEE CIVIL DRAWINGS FOR GRADING PLAN.
2. SEE LANDSCAPE DRAWINGS FOR IRRIGATION PLAN.



**CHAIN LINK GATE CLEARANCE** SCALE: 1/2" = 1'-0"

SCALE: 1/2" = 1'-0"

1